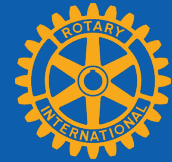


ROTARY CLUB OF MANCHESTER

NEWSLETTER

MAY 2021



From our President Derek Evans ***Rotary Month for 'Youth Service'***

We are now beginning to see the light of day and the rules of Covid are becoming more relaxed. Our meeting to determine the pattern of our club meetings for the imminent future were well aired and a final pattern will be put to the club for approval in early May.

In the absence of our Arndale collection for Francis House, last Christmas, our donation was well received. It is hoped that this next Christmas, all our members will get involved to collect as much as possible. Charities are going through a bad time and the need for our full support is imperative.

Our guest speaker, Graham Jackson PDG, gave an incredible talk on 'The History of Ladies in Rotary'. Over the years, it was a hard nut to crack but eventually ladies won the day and what a wonderful improvement it has made to the movement of Rotary. Ladies, where would we be without you? – On that note, I will sign off.

Best wishes to you all, Derek, President

In this issue...

Fellowship–April 1

Club Meetings:

Francis House
Business Meeting
Graham Jackson PDG

Save The Planet:

A new initiative

Beirut Appeal

Update

MEMBER SECTION:

Member contributions!
Jokes, poems, photos,
recipes, and more!!!!!!!

Notices

Up and Coming



TAKE ACTION: [Rotary Club of Manchester](#)

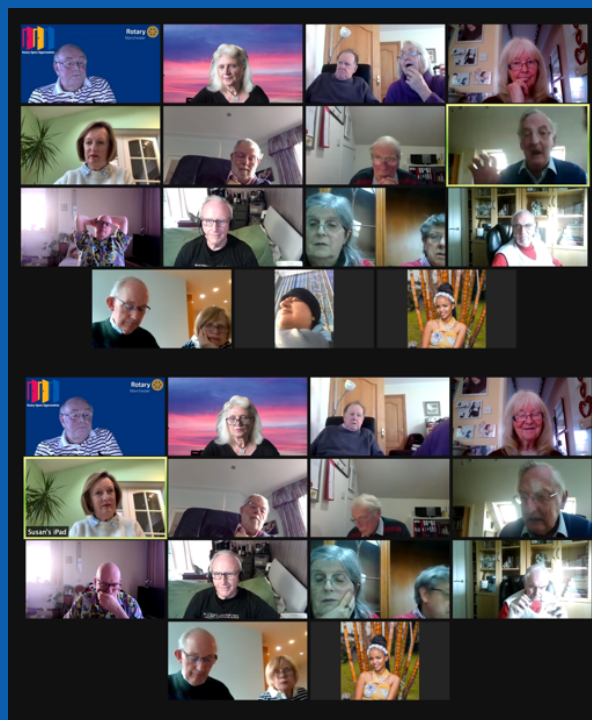
Zoom April Fellowship – April 1 2021

With more than 20 people in attendance, our April 2021 Fellowship took place on Zoom – our new normal for fellowship evenings.

It was a **Hobbies and Interests** themed night.

Hobbies and Interests shared included:

Sudoku
Crosswords
Jigsaw Puzzles
Flight simulator
Listening to airplane scanner
Family history & research for family tree
Theatre
Collecting theatre programmes & bills
Cross-stitching, quilting, making face masks
Baking & Cooking
Sketching & painting
Tennis
Gardening



Please try to meet up on Zoom for the next fellowship on May 6th with the theme of **movies**.



Some screen shot photos taken during our Zoom fellowship!

ROTARY CLUB MEETING – APRIL 8TH 2021

FRANCIS HOUSE – RACHEL ASTILL



Garden view of Francis House

Our meeting on April 8th was highlighted with a talk from Rachel Astill, fundraising officer from Francis House Children's Hospice.

Francis House supports approximately 2,000 people at any one time with respite care, homecare, sibling support, end of life care and emotional and bereavement support.

Rachel explained the challenges of Covid to Francis House. They had to cancel almost all services except for end of life care and emergency respite care. Here are some facts and figures from Rachel that indicate some of these.

Over 6000 calls of telephone support were made in 2020, in response to families' increased need for support during such a stressful time, especially whilst respite stays have not been possible.

PPE sourced in the first 6 months of the pandemic included 15,000+ surgical masks, 14,650 aprons and around 50,000 pairs of surgical gloves – all significantly increasing our expenditure.

The impact of the pandemic on our fundraising has resulted in a £600,000 deficit. Our normal annual running costs are £4.7 million.

As a result of reduced investigative resources over the last year, we expect to see a big spike in the number of young people requiring end-of-life care in the coming months and in particular the number of brain tumours that have gone undiagnosed for longer periods.

-Continued next page -

We are also preparing for an increased need for emotional support brought on by the stress and isolation of lockdowns and shielding. We expect a need for more respite stays to relieve weary parents and a higher number of emergency cases caused by young people missing normal hospital appointments, life-enhancing activities etc.

Rachel

With most of their avenues of fundraising cancelled, including our own Rotary Christmas appeal at the Arndale Centre, the Chick Easter appeal, the Great MCR run, the Three Peaks Run, and more, the centre must deal with a huge £600,000 deficit.



Some screenshots from the meeting

ROTARY CLUB MEETING – APRIL 15TH 2021

BUSINESS MEETING

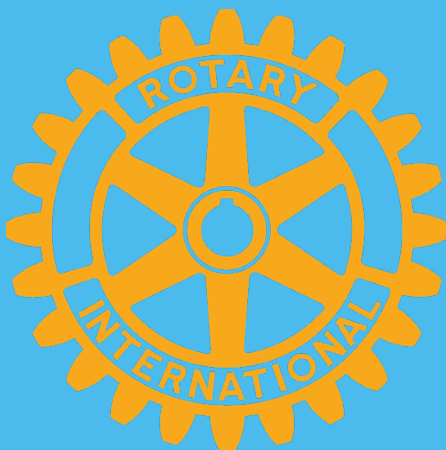
The main focus of our April 15th meeting was to deal with two main items:

1. Meetings after Covid
2. Membership Recruitment

Still to be finalized but it seems that a combination of in person meetings (maybe with live streaming) along with some meetings completely on Zoom will probably be in our after Covid future. Locations for in person meetings still need to be discussed.

New membership ideas seemed to focus on the idea of projects with members working in groups, to entice new associate members to the club. Projects suggested were two international projects – WOW Water Project and Florian and also two local community projects to be decided.

Our new meeting schedule and project ideas will be published in the newsletter, once the decisions have been finalized.



ROTARY CLUB MEETING – APRIL 22ND 2021

GRAHAM JACKSON PDG

THE HISTORY OF WOMEN IN ROTARY



The guest speaker for our April 22nd meeting was Graham Jackson PDG. He gave an interesting talk on The History of Women in Rotary.

Editor's Note: As I was unable to attend, Graham kindly agreed to submit the following from his talk. The screen shots from the meeting were taken by Peter Hartley.

Graham Jackson PDG

Ladies in Rotary Presentation A Potted History

When Rotary International was founded in Chicago by attorney Paul Harris in 1905 it was a time when men dominated the workforce. Women were mostly confined to the home and the glass ceiling didn't even exist. Women were still 15 years away from being granted the right to vote in the United States and it was not until 1928 that women received the vote in UK. Rotary was very much a "man's world", with women excluded from membership.

The predominantly dependent status of women in western societies changed irrevocably during World War II as women filled occupations previously the domain of men when the men were called upon to serve in the armed forces.

This change accelerated with the growth of the feminist movement in the 1960s and 1970s. Throughout the course of nearly seven decades of Rotary's history has run the thread of the debate of women as members, yet the first constitution of the Chicago Club #1, adopted in January, 1906, makes no reference to gender, referring only to "persons."



Some members at the meeting

Continued next page

1910. The first gathering of individual Rotary Clubs was the meeting of the National Association of Rotary Clubs in Chicago in **1910**. Some delegates from among the 16 Clubs represented made the first attempt to officially sanction Women's Auxiliaries. They were overwhelmingly rejected.

In 1911 an all-women club existed in Minneapolis and between 1911 and 1917 an all-women Rotary club existed in Duluth, Minnesota alongside the Men's club. The Women's club met on the 2nd and 4th Tuesday of the month, while the Men's Duluth club #25 met on the 1st and last Thursday.

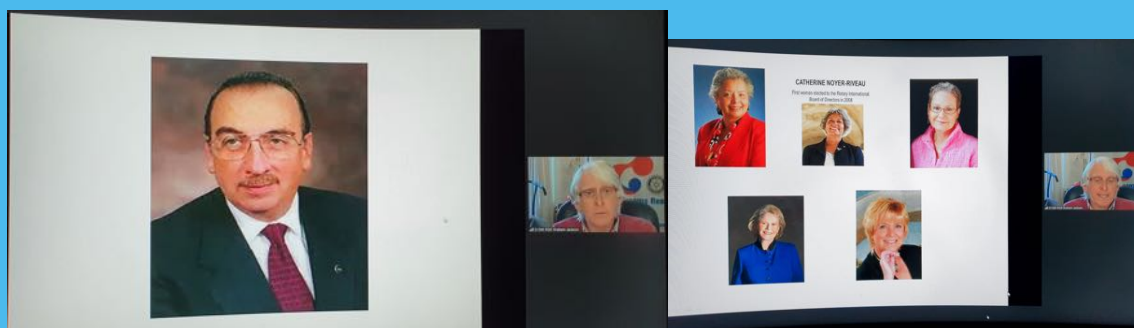
In 1912, the board of directors of the Belfast Club discussed the advisability of electing women to membership or allowing them to attend weekly luncheons. The club records of that period indicate the board considered it undesirable to elect women to membership or have them at the weekly luncheons. In that year, also, Ida Buell of the Duluth women's club spoke to the 1912 Duluth Convention seeking support for women's clubs. The Convention discussed the admission of women and rejected the idea.

The **1921** Convention in Edinburgh, Scotland produced the Standard Club Constitution in which Article 2, Section III stated "A Rotary Club shall be comprised of men . . . "

In May 1921, Alwilda F Harvey the wife of the Chicago Club president convened a luncheon meeting of 59 women who formed "Women of Rotary." The Board of RI rejected that name, so it was changed to "The Women of the Rotary Club of Chicago."

In England, on **15 May 1923**, the Manchester Club proposed "The Formation of a Ladies' Rotary Club in Manchester." The proposal was lost, but instead, the first Inner Wheel Club was formed with Mrs Margarett Golding as President.

BUT It was **not until 1964 in Toronto** that a proposal to admit women into Rotary was put before an International Convention. It was rejected, as were similar efforts **Between 1964 and 1977**, when a number of unsuccessful attempts were made to provide for the admission of women.



Continued next page

1977/1978 However, the die was finally cast by a club in a small California town. On the occasion of its 25th anniversary On June 1, 1977, the Rotary Club of Duarte, California inducted three woman members ; club admitted Mary Lou Elliott and Donna Bogart to membership on 1 June, 1977 and they were followed shortly afterwards by Rosemary Freitag with the Club submitting their paperwork to RI with only their first initials and last names.

Within months, Rotary International discovered the subterfuge and revoked the Club's charter. When the Club requested a hearing, they were ordered to oust the three women. When they refused to do so, the reaction of the Board of RI was predictable: on 27 March 1978, Duarte's charter was terminated.

Duarte re-named itself the "Ex Rotary Club of Duarte" and in June 1978 filed a suit in the California Superior Court against the RI Board decision. This was not heard by the court until 1983 when Judge Max Deutz ruled against Duarte.

- In 1986, Duarte Club appealed that decision to the California Court of Appeal and the Deutz judgment was reversed.
- The RI Board appealed that decision to the California Supreme Court which refused to hear the case; and
- the RI Board then appealed to the United States Supreme Court in 1986.

On 30 March, 1987, the US Supreme Court heard an appeal by the Board of RI against the California Court of Appeal decision and on 4 May handed down a 7-0 unanimous decision affirming the California Court of Appeal decision, ruling that :

- Duarte could not discriminate against members because of gender ;and that
- Rotary clubs may not exclude women from membership on the basis of gender.

Rotary issued a policy statement that any Rotary club in the United States can admit qualified women into membership.

Duarte had the final say in the matter when on 23 June, 1987 Dr Sylvia Whitlock was inducted by DGE Dr Kim K Siu as the first woman Club President in the history of Rotary.

The Rotary Club of Marin Sunrise, California (formerly Larkspur Landing), is chartered on 28 May 1987. It becomes the first club after the U.S. Supreme Court ruling to have women as charter members.

In November 1988, the RI Board of Directors issues a policy statement recognizing the right of Rotary clubs in Canada to admit female members based on a Canadian law similar to that upheld by the U.S. Supreme Court.

- continued next page -

Every 3 years, Rotary's legislative body, the **Council on Legislation** meets. In earlier meetings, the Council had several times voted down the idea of admitting women to Rotary membership. This changed in January 1989 when the Council met in Singapore and adopted an amendment to the Rotary constitution that would permit any Rotary club worldwide to admit women into membership. To amend Rotary's constitutional documents requires a 2/3rds majority vote. At that meeting, 328 delegates or 73.7%, voted in favour of deleting the word "male" from the constitutional documents.

The 1989 Council on Legislation vote to admit women into Rotary clubs worldwide remains a watershed moment in the history of Rotary. *"My fellow delegates, I would like to remind you that the world of 1989 is very different to the world of 1905. I sincerely believe that Rotary has to adapt itself to a changing world,"* said **Frank J. Devlyn**, who would go on to become RI President in 2000-01.

The vote followed the decades-long efforts of men and women from all over the Rotary world to allow the admission of women into Rotary clubs, and several close votes at previous Council on Legislation meetings.

The response to the decision was overwhelming:

- By June 1990, the number of Lady Rotarians had rocketed to over 20,000
- By July 2010, the number of women worldwide was 195,000 (16% Rtns)
- By July 2016, the number of women worldwide had surpassed 250,000.
- By July 2020, the number of women worldwide was 277,000 (23% Rtns)

Women immediately embraced the leadership opportunities provided by their clubs and have been making an impact in communities around the world ever since.

Prior to the 1989 Council on Legislation decision, only Rotary clubs in the U.S.A. and Canada could admit women members. By the time of the Council's vote there were an estimated 10,800 Women in Rotary Clubs in those 2 countries.

In 1989, the first woman to be inducted in **RIBI** was Ms Tess Eyre (classification auctioneering) in Dun Laoghaire RC. **In less than a year after the Council's vote**, women were members of Rotary clubs in 33 countries and territories, representing 5,000+ clubs in 239 districts. Women were Rotarians in such diverse countries as: Australia, Bangladesh, Brazil, Chile, Columbia, Hong Kong, Indonesia, Korea, Mexico, Nepal, Sri Lanka, and Thailand.

Within 5 more years, the first 8 women were taking their places to serve as District Governors for the year 1995-96.

BY MY YEAR AS DISTRICT GOVERNOR IN 2008/2009, with 20 years of membership (1987-2007), Women in Rotary accounted for approximately 178,050 Rotarians – 14.54% of the total membership.

-continued next page-

At MY International Assembly in January 2008, there were 65 women DGEs from 24 nations, including Argentina, Brazil, Ecuador, Iceland, India, Nigeria, ROMANIA, Slovakia, and Venezuela.

– with 3 of the 29 RIBI Districts represented by Lady DGEs

Once women completed their service as Governors, they were eligible to be considered for **appointment as International Training Leaders** – a select group of about 40 PDGs who prepare the next incoming class of DGEs. The first 2 women to receive this assignment – 1 from Florida and 1 from Alaska -- were **appointed in 2000**, within 5 years after the first women had served as Governors.

The following Timeline of women in Rotary shows us that senior positions in RI have been held by Ladies:

1. In 2005 **Carolyn E. Jones** begins her term as the first woman appointed as **Trustee of The Rotary Foundation**.
2. In 2008 **Catherine Noyer-Riveau** begins her term as the first woman elected to the **RI Board of Directors**.
3. In 2012 **Elizabeth S. Demaray** begins her term as **RI Treasurer**, the first woman to serve in this position.
4. In 2013 **Anne L. Matthews** begins her term as the first woman to serve as **RI Vice President**.
5. In 2018 **Brenda Marie Cressey** begins her term as the first woman to serve as **Vice-Chair of The Rotary Foundation**. In April-June 2019 she serves as **Chair of the Foundation**, the first woman appointed to this role.
6. On 6th August 2020 – **Jennifer Jones** was nominated as **RIP 2022/2023** and is appointed to that position in October 2020



So, in Conclusion:

Sylvia Whitlock, the first female President of a Rotary Club said:

“Just the face of Rotary has changed. But Rotary’s commitment to service has not changed. – and that’s why we join, because we want to serve.”

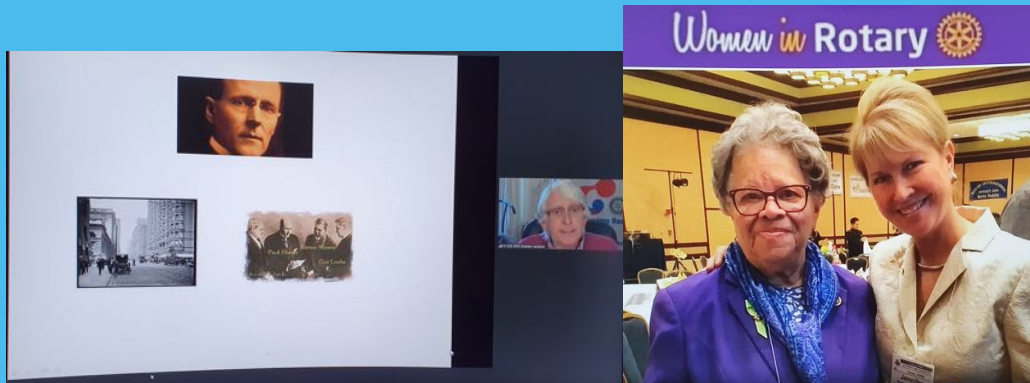
Eleanor Roosevelt, the wife of a former U.S. President, once said:

“The future belongs to those who believe in the beauty of their dreams.”

- continued next page -

IN MY YEAR AS DISTRICT GOVERNOR , 2008/2009, RI President D. K. Lee selected as his theme: *"Make Dreams Real"*

Sometimes dreams are really what life is all about. This little piece of Rotary Global History that I have tried to relate tonight is about living the dream.



I cannot declare that we live in a perfect Rotary world where women are embraced in every corner of the world, but I can say with absolute certainty that change is in the air and it is happening everywhere. And I look forward to the day when we make a Club visit and, having been asked "how many Members do you have in your Club" we are not asked that inevitable, supplementary, question, as tends to be the case currently: "... *and how many Women Members do you have?*" I look forward to the day when we will all just be Rotarians.

Thank you for letting me talk to you today about dreams and about Rotary.

PDG Graham Jackson (District 1285)
22nd April 2021



Save The Planet



Home, Garden and Driving Actions

- Drive economically to save fuel
- Don't carry excess or unnecessary loads in your car
- Keep tyre pressures at recommended levels
- Have your house as well insulated as possible
- Pull curtains at night
- Grow some of your own veg
- Plant a fruit tree
- Support tree planting by others, e.g., National Trust
- Make your own garden compost



Rotary Club of Manchester Suggestions

Savings on water and power

- Don't leave gadgets on standby for long periods
- Turn off unnecessary lights
- Don't turn on lights when not needed
- Put a full load in the dishwasher
- Put a full load in the washing machine
- Wash clothes at the lowest or most economical temperature
- Whenever possible dry clothes outside or inside in place of a spin dryer
- Cook whenever possible with a microwave (e.g. soups and drinks)
- Put only the required water in a kettle
- Use any spare boiling water to kill weeds in place of weed killer
- Shower instead of bathing
- Share a bath
- Shower for a shorter time
- Shower only when needed
- Turn central heating down a little and wear an extra sweater
- Install solar panels
- Wash clothes a little less often
- Flush toilet less often
- Place a brick or similar in the toilet cistern
- Fit a water meter (this often reduces water usage)
- Mend dripping taps
- Wash the car less often
- Collect rainwater for the garden
- Don't use hosepipe on the garden most plants and lawns will recover
- Run taps slower when washing hands etc.

More next page →

Life-style Actions

- Walk for short journeys – healthier than driving
- Use public transport if possible
- Car share
- Buy local produce or that which is least travelled
- Simply buy less stuff, especially clothing
- Buy used items instead of new
- Recycle as much as possible
- Send as much as possible to charity shops instead of landfill
- Eat less meat, especially red meat
- Become vegetarian
- Holiday in the UK
- Try to re-use items – e.g., plastic bags
- Plan carefully the food you buy to avoid waste
- Continue home working if practical

Watch our website for more information over time! Copy and paste this link! Thanks to Ernie.

<https://www.rotary-ribi.org/clubs/page.php?PgID=834382&ClubID=299>

The Greenpeace logo, featuring the word "GREENPEACE" in a bold, green, sans-serif font with a slightly distressed or hand-painted appearance.

**The message below is from
Greenpeace**

Every day, millions of us do our bit to cut plastic waste. We recycle plastic fruit tubs, yoghurt pots, plastic juice bottles -- making sure they're in the right bin. **But what happens next is shocking.** Instead of being recycled, UK household plastic packaging is being **shipped to other countries.** Huge amounts end up in Malaysia, Indonesia and Turkey.

When it arrives, it's at high risk of being **dumped or burned, causing serious illnesses for people living close by.** [1, 2]

It's plain wrong this is happening. Our government would never allow another country's plastic to be dumped in the UK. How is it okay the other way around?

We've launched a campaign to end this, calling on our government to **stop the UK dumping plastic waste on other countries.** Can you give a few pounds a month to **help make this an issue our government can't ignore?**

Our plastic problem has hit a level where recycling alone can't fix this. In the UK, we produce **more plastic waste per person than almost any other country** -- only the US is worse. [3]

Such an **overwhelming volume of plastic waste** means huge amounts are being shipped abroad.

But instead of being processed in other countries, it often ends up in waste dumps. The result is a pollution crisis for communities who live close by, with people ending up forced to **breathe toxic smoke from burned plastic.**

In Malaysia, CK Lee - a solicitor working with the Kuala Langat Environmental Association - explained to Greenpeace's *Unearthed* team: "[people are] **having breathing difficulties, having difficulty to sleep, feeling nausea, feeling unwell.**" [2]

- Continued next page -

This is wrong. And it has to stop. That's why we're calling on the UK government to fix the plastic waste crisis, including setting a target of cutting our single-use plastic in half.

Can you fund our work to **pressure the government to cut exports of plastics waste** and commit to a 50% reduction in single-use plastic by 2025? Our campaign's only just launched.

We know that change is possible. After a staggering 2.3 million people signed our petition calling on supermarkets to ditch single-use packaging, we've finally started to see change -- **Sainsbury's and Aldi both pledged to reduce their plastic consumption 50% by 2025.** [4, 5]

But the UK government needs to do more to solve the wider problem. So in the coming weeks and months, Greenpeace activists and volunteers will be working together to scale up our campaign.

We hope that you'll be part of it too. **Because when we work together, we can be a force for change.** And in the meantime, **please don't stop recycling.** A recycling system that works well is a crucial part of the puzzle.

NOTES

1. No Time to Waste - Tearfund report

<https://learn.tearfund.org/-/media/learn/resources/reports/2019-tearfund-consortium-no-time-to-waste-en.pdf>

2. UK household plastics found in illegal dumps in

Malaysia – Greenpeace *Unearthed* investigation

<https://unearthed.greenpeace.org/2018/10/21/uk-household-plastics-found-in-illegal-dumps-in-malaysia/>

3. US and UK citizens are world's biggest sources of plastic waste – study

<https://www.theguardian.com/environment/2020/oct/30/us-and-uk-citizens-are-worlds-biggest-sources-of-plastic-waste-study>

4. Sainsbury's commits to reduce plastic packaging by 50% by 2025

<https://www.greenpeace.org.uk/news/sainsburys-promise-to-reduce-plastic-by-half-thanks-to-people-power/>

5. Aldi will remove 74,000 tonnes of plastic packaging during the next five years

<https://www.al dipresscentre.co.uk/business-news/aldi-to-remove-over-2-billion-pieces-of-plastic/>

If you wish to sign the petition to stop UK plastic waste, copy and paste this link to go to the webpage.

https://secure.greenpeace.org.uk/page/s/plastic-waste-exports?source=EM&subsource=OCPOPSPEEM112E&utm_source=newsletter&utm_medium=Email&utm_campaign=Plastic+Waste+Exports+Petition+Lead+Gen+PE+20210322&utm_term=Non-Signers

BEIRUT DISASTER APPEAL

ROTARY CLUBS OF BEIRUT BAABDA AND MANCHESTER BEIRUT DISASTER APPEAL

Roy Chapman PHF, Rotary Club of Manchester
Mario Nasard, President, Rotary Club of Baabda

The awful Beirut Port explosion of August 4th 2020, killed over 200 people, injured thousands and devastated much of the city. The Operation Florian UK team and the Rotary Club of Baabda (Beirut) ensured a team from UK Search and Rescue Assistance in Disasters (SARAID) arrived within 3 days. Working with major authorities and the Lebanese Disaster Management Unit, SARAID coordinated specialist search and rescue work. The RC of Baabda, alongside Save the Children, arranged emergency transport, accommodation, and other assistance.

Hundreds of buildings, especially in the historic parts of Beirut, need to be repaired. The Rotary Clubs of Manchester and Baabda, in partnership with Dutch NGO DORCAS/Tabitha, plan to:

- Repair houses, schools and small businesses and essential services like water and lighting.
- Help regenerate local communities,
- Support displaced families.
- Support the ongoing work of SARAID.

Damage repair and regeneration will take years.

The initial target is £5,000, to be spent where it is most needed. Each £100 will pay to repair a home entrance, damaged windows, plumbing, damaged roofs and/or other essential work.

Thanks to the generosity of District 1285 Clubs, nearly £4,000 has been raised. A big thank you to all the Clubs who have donated.

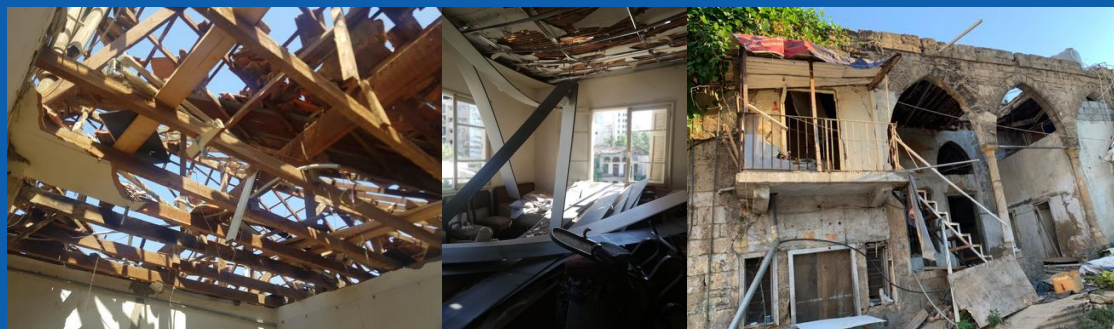
We are still open for donations:

BACS to Account No. 14435136, Sort Code: 01 05 31, use Ref: Beirut and your Rotary Club name - or via Just Giving page at:

<https://www.justgiving.com/crowdfunding/rotaryclubofmanchesterbeirutappeal>

Further info:

<https://www.rotary-ribi.org/clubs/homepage.php?ClubID=299>



MEMBERS SECTION

FROM THE EDITOR

With isolation and social distancing, normal meetings at the Manchester Hall are not taking place and many of the wonderful things that we do, are postponed or delayed for now!

The virus has, not only made everyone realise how much we usually take for granted, but as a Rotary Club, forcing us into the world of technology and the internet. This is a good thing!

This virus does not seem to be going anywhere for a while but the vaccines for Covid-19 are now being distributed, so there may be some small signs that we may be able to meet together again sometime in 2021.

Thanks to the many people that contributed to this section of the newsletter – it is meant to inform, along with some things to cheer us up and help us remember that a sense of humour is always a great thing!

Take care and stay safe
Dale

Thanks to the contributors of this Members Section:
Hope that I did not miss anyone!

Dale McAulay
Helen Roberts
Roy Chapman
Roger Walker

Please free to send me contributions for this section for the next edition of the newsletter. Dale

Headspace Guide to Meditation – from Helen

Take a deep breath and open your mind with this mini series. Over the course of eight animated episodes, Andy Puddicombe - former Buddhist monk and co-founder of the highly successful Headspace meditation app - guides you through eight 20 - minute episodes, each showcasing a different mindfulness technique that aids in the practice of meditation. Focusing on subjects such as stress, sleep, and letting go, every episode ends with a simple, guided meditation session. Perfect any time of day.

Watch on [netflix.com](https://www.netflix.com) now.

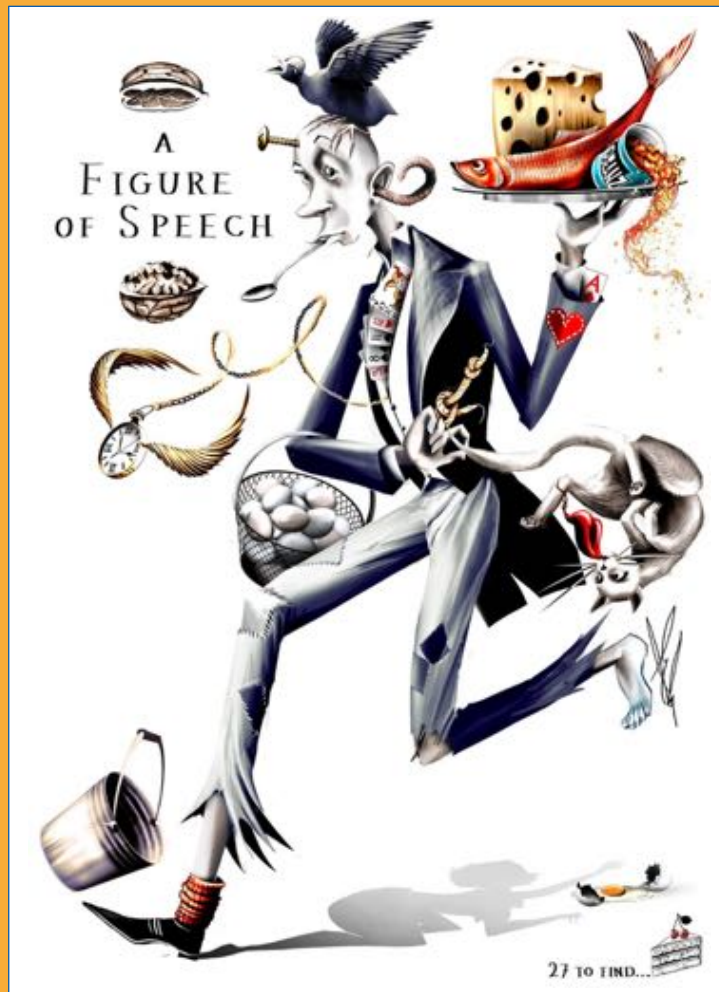


**More contributions
by Helen**

27 Figures of Speech in one image

Can you find them all?

Answers later in the newsletter



A Swarm of bees in May

A swarm of bees in May
is worth a load of hay;
A swarm of bees in June
is worth a silver spoon;
A swarm of bees in July
Isn't worth a fly.

Traditional rhyme.

Before the days of scientific weather forecasting country folk had to keep a weather eye open to predict what conditions were going to be in store for them. Watching the clouds, the colour of the sky and the movement of birds might have helped them in their weather predictions. Many of the rhymes we know today have come from centuries back and have more than a grain of truth in them.



from Helen



Bike Week May 30th to June 5th

Bike week, the UK's largest biking event of the year, will be going ahead in 2021 albeit in a slightly different format. Current restrictions mean that it is impossible to put on one big event to bring everyone together. So, instead, the organisers are holding a series of online events and encouraging you to take part in the 7 Days of Cycling Challenge. Along with thousands of others, you will be encouraged to get on your bike for as many days as you can during the week. The concept is "everyday cycling for everyone" and aims to encourage those who wouldn't normally cycle to get on their bikes. Any outing on a bike counts – whether that's nipping round to a friend's house, cycling to work or school, enjoying a leisurely ride with the family or tackling a cycling challenge.

To find out more, visit [cyclinguk.org/bike week](https://cyclinguk.org/bike-week).



An earworm
In a nutshell
On a silver platter
On the wings of time

Answers to Figure of Speech

Time flies
An ace up your sleeve
Spill the beans
Cat got your tongue
Got the cat by the tail
Kick the bucket
Born with a silver spoon in the mouth
Don't carry all your eggs in one basket
Wear your heart on your sleeve
Keep your cards close to your chest
Nail on the head
Loose screw
Something fishy
Fish out of water
Tie the knot
Living in your shadow
Piece of cake
Bird Brain
Cherry on top
Chalk & cheese
Knock your socks off
Red herring



From Roy Chapman,

A thought, it would be nice if our next Newsletter carried a short reference to HRH and to the wonderful example he provides of service and commitment to duty. HRH was a role model of service, of thought for humankind and trying to make things better. Examples include the Duke of Edinburgh Award , which has helped the development of millions of young people, he was a leader in conservation (and the environment is now a recognised Rotary area of focus).

To quote from the following letter from Joanna Cadman, Chairman, Royal Society of St George

"The Duke of Edinburgh has been an enormous influence in all our lives. A brave and determined man, he was mentioned twice in despatches during the Second World War and would have gone on to a glittering naval career if he had not instead married Princess Elizabeth, as she was then, and turned his considerable energies to supporting her throughout their long and very happy marriage. He has left us such an incredible legacy in so many ways, the Duke of Edinburgh Award being just one example of his influence on our country and on the whole world, and his interest in and passion for the environment, for the future of the world and for young people is unrivalled."

The same focus and themes are found in Rotary.

Logs to Burn

*Beech-wood fires burn bright and clear
If the logs are kept a year:
Store your beech for Christmas tide,
With new-cut Holly laid beside.
Chestnut's only good they say,
If for years 'tis stored away;
Birch and Firwood burn too fast,
Blaze too bright and do not last:
Flames from Larch will shoot too high,
Dangerously the sparks will fly.
But Ash-wood green and Ash-wood brown
Are fit for a Queen with a golden crown.*

*Oaken logs, if dry and old,
Keep away the winter's cold;
Poplar gives a bitter smoke,
Fills your eyes and makes you choke;
Elmwood burns like churchyard mould,
E'en the very flames are cold.
Hawthorn bakes the sweetest bread-
So it is in Ireland said;
Apple-wood will scent the room,
Pear-wood smells like flowers in bloom,
But Ash-wood wet and Ash-wood dry
A King may warm his slippers by.*

Poem submitted by Roger Walker -To the best of knowledge and research Lady Celia Congreve wrote the poem.

Some spring photos around Manchester taken by Dale



NOTICES

Fund Raising

Charity Draw - Next Draw in July

This is our only source of income for the Charity Account and is likely to remain so for some time to come.

Therefore, each member can help raise money in the following ways.

Immediately, if possible, increase your own monthly subscription.

Encourage any friends or family who support our aims and objectives to also subscribe.

If you do not already contribute do so as soon as possible.

All you need to do is let me have their names and addresses and I will do the rest.

Thank you in advance.

Your help is much appreciated.

Roger Walker

April Charity Draw Winners

The winners were:

Jitu Ruia £150

Susan Craig £50.

Next draw will be in July

Club Charity Donations

March 2021

Francis House £600

Support Dogs £100



To donate to the Beirut Disaster

***For more information contact Roy
Chapman PHF, Rotary Club of Manchester***

[https://www.rotary-](https://www.rotary-ribi.org/clubs/homepage.php?ClubID=299)

[ribi.org/clubs/homepage.php?ClubID=299](https://www.rotary-ribi.org/clubs/homepage.php?ClubID=299)

Donate by BACS to Account No. 14435136,

Sort Code: 01 05 31, use Ref: Beirut and

***your Rotary Club (so we can acknowledge
receipt)***

or use our Just Giving page at:

***[https://www.justgiving.com/crowdfunding/
rotaryclubofmanchesterbeirutappeal](https://www.justgiving.com/crowdfunding/rotaryclubofmanchesterbeirutappeal)***

Volunteer Expo Online

Saturday 7th and Sunday 8th May

Rotary is bringing to life the UK's first national volunteering show, celebrating the impact of volunteers, charities and social impact organisations. This will be a ground-breaking public event for Rotary and the whole volunteer sector with speakers, workshops and virtual exhibition.

[BOOK FREE TICKETS](#)



**PRESIDENTIAL
CONFERENCE** ITALY

Venice, 5-7 November 2021

Molino Stucky Hilton Hotel

ORGANISING COMMITTEE

Venice Presidential Conference 2021
c/o Studio Sforza, Busatto, Uliana e Associati
Corte del Medà 29 – 31053 Pieve di Soligo (TV)
info@rotaryconferencevenice.org
<https://www.rotaryconferencevenice.org>

ROTARY AND THE CHRISTIE CHARITY BIKE RIDE

Michael Metcalfe (Ernie's son) is riding from Land's End to John O'Groats starting May 31st and expects to finish on June 12th.

He is expecting to have to do about 70 miles a day for 14 days.

All donations and sponsorship money are being channelled through our club with the main beneficiary being The Christie and a residue 25% going to our Charity account.

Further details of how to support will be issued shortly



POLIO UPDATE

Some excerpts form the report

How is the PolioPlus programme going? Sadly, the answer is not as well as hoped. The two principal issues affecting the programme are the Covid-19 pandemic and the unavoidable reduction in fund raising by Rotarians from the local community, and the proposed reduction in foreign aid by the UK government from 0.7% to 0.5% of gross national income which could mean that the UK may not be able to fulfil its pledge of £400m over 4 years to the global polio eradication campaign.

But Rotarians can rise to the challenge by 1) by achieving the annual goal of \$100 per member for the Rotary Foundation Annual Programs Fund, and 2) by donating \$55 per member to PolioPlus. As long as these donations are made to Rotary Foundation UK, gift aid and a favourable exchange rate brings these amounts down to around £60 and £30 respectively – less than one cup of coffee per week. You may be asking why giving to the Annual Fund matters to PolioPlus. The Annual Fund is the source of the DDF which districts receive each year based on donations 3 years previously, and which enables them to carry out district and global projects. One of those projects is PolioPlus and the recommended transfer of 20% of new DDF each year is really a donation to Rotary's number one humanitarian project – ridding the world of polio.

A second reasonable question in this pandemic year is what is happening to the polio eradication campaign. The answer is that it is at a point where experts are confident that continued efforts could see wild polio virus eradicated forever by 2026. Types 2 and 3 wild polio viruses were eradicated some years ago, and type 1 is only circulating in two countries, Afghanistan and Pakistan. Despite the difficulties caused by Covid-19, there have only been 2 cases of paralytic polio in 2021, both in January, and none have been detected since then by the effective and highly skilled teams in those countries. In the absence of cases the detection of poliovirus in environmental samples is concerning because it shows that the virus is circulating at low levels in the community, but the numbers of positive samples is falling – 102 in the last 6 months compared to 250 in the 6 months before that.

The systems created to deliver polio vaccines to the hardest-to-reach areas of the world are helping Polio workers find COVID-19 cases, trace contacts and provide information on how to slow the spread of the virus. COVID-19 reminds us that disease outbreaks anywhere can be a threat everywhere. That's why Rotary is more committed than ever to ending the threat of polio for every child, everywhere.



SUPPORT DOGS

A reminder to collect stamps for Support Dogs.

The info. on Support Dogs re. stamp collecting will be found on

www.supportdogs.org.uk The stamps have to be cut off the envelope leaving a 1cm. border approx.

Birthdays

May

7th Susan Craig

9th Peter Hartley

10th Indra Gupta

30th Barbara Rosenthal

June

1st Richard Dyson

6th Eddie Hanson

10th Sinclair McLeod

13th Ernie Metcalfe

CLUB TIES

We have some Manchester Club Centenary Ties still available .

Anyone wishing to buy a new one or to replace an old one please contact, either President Derek or Secretary Peter.

The discounted price is £10 each.



How to stay safe online

Humberside Police issue advice on how to protect yourself on digital devices and social media.

Steps you can take include:

Ensure the privacy settings on your profile as high as possible, so that only your friends can see your posts, pictures and details.

Never disclose private information such as your phone number, pictures of your home, your address or birthday. This applies to your posts and your profile

Don't accept friend requests from people you don't know. Some online criminals use this as a means of phishing or finding blackmail or sexual offences victims.

Don't do anything you're not comfortable with.

Remember that once a post or photo has been shared, you no longer have control of it. Don't post photos or comments that could end up causing you issues in the future. If you wouldn't want your mum to see it, don't post it.

If you're concerned about something you have seen online, call our non-emergency 101 line or speak to your local officer.

Up and Coming Events

Links to zoom events will be emailed to you

ZOOM FELLOWSHIP – Thurs May 6 18:00–19:00

CLUB COUNCIL ON ZOOM – All Welcome
Tuesday May 11 18:00 – 19:00

MEETING ON ZOOM - Thurs May 13 18:00-19:00
Club AGM

MEETING ON ZOOM - Thurs May 27 18:00-19:00
Swati Mukherjee -District Int'l Chair – Journey from
Mumbai to Manchester - reflections

ZOOM FELLOWSHIP – Thurs June 3 18:00–19:00

CLUB COUNCIL ON ZOOM – All Welcome
Tuesday June 8 18:00 – 19:00

MEETING ON ZOOM - Thurs June 10 18:00-19:00
Club Assembly

MEETING ON ZOOM - Thurs June 24 18:00-19:00
PDG Patrick Tyrell – Rotary Foundation



Keep watching the website to find out about more Zoom events and meetings and when our regular meetings will return to Manchester Hall.

Club Meeting Info

Weekly: Every Thursday at 12:30

Place: Manchester Hall

36 Bridge Street, Manchester,

M3 2BT



Rotary Opens Opportunities

Rotary Club of Manchester Team 2020-2021

President

Derek Evans PHF

President Elect

Roy Chapman PHF

Membership

Robin Graham PHF

Vocational

Julie Chapman PHF

Executive Secretary

Robin Graham PHF

Secretary

Peter Hartley PHF

Community

Julie Chapman PHF

Rotaract

Roy Chapman PHF

IT

Peter Hartley PHF

Treasurer

Indra Gupta

International

Dale Anne McAulay

Youth Service

Roy Chapman PHF

Fellowship

Barbara Rosenthal MPH

Newsletter Editor

Dale Anne McAulay

Immediate Past President

Sarah Withington

Rotary Foundation

Bill Laidlaw PHF

Attendance

Roger Walker PHF

Primary Webmaster

Peter Hartley PHF